



jordan fishwick

Apartment B 128 Manchester Road, SK9
Guide Price £140,000

128 Manchester Road Wilmslow

Guide Price £140,000



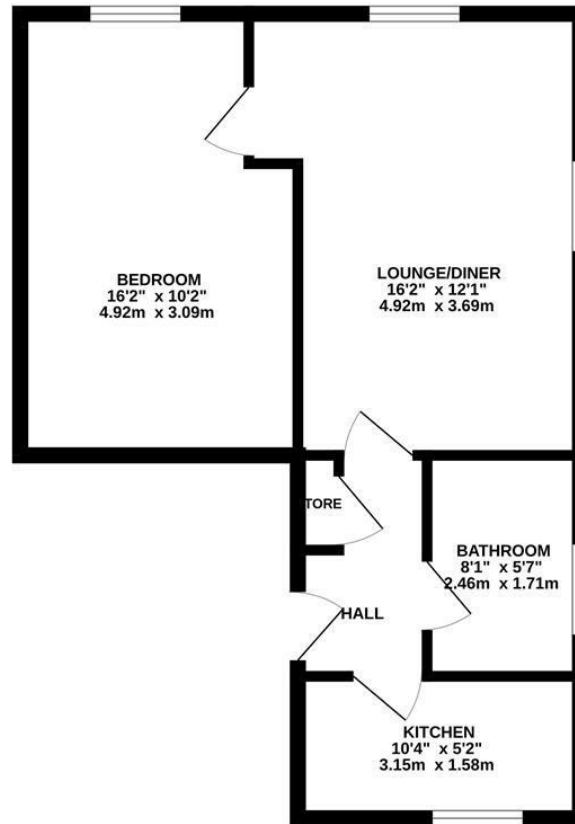
**** NO ONWARD CHAIN ****This spacious and well proportioned one bedroom flat is conveniently placed for both Wilmslow town centre and Handforth village and is ideal for first time buyers and investors alike. The internal accommodation comprises in brief; Entrance hallway with plenty of storage, spacious living, kitchen, good sized double bedroom and three piece white bathroom suite. Being in close proximity to local amenities and commuter links this property is sure to please the future owner. Viewings essential to fully appreciate.



- One bedroom flat
- No onward chain
- Off road parking
- Spacious accommodation
- Close proximity to local commuter links
- Easy access to Wilmslow town centre and Handforth Village
- Walking distance to local amenities



Energy Efficiency Rating		
	Current	Potential
Very energy efficient - lower running costs		
(92 plus) A		
(81-91) B		
(69-80) C		70
(55-68) D	57	
(39-54) E		
(21-38) F		
(1-20) G		
Not energy efficient - higher running costs		
England & Wales	EU Directive 2002/91/EC	



Measurements are approximate. Not to scale. Illustrative purposes only.
Made with Metropix ©2024



These particulars are believed to be accurate but they are not guaranteed and do not form a contract. Neither Jordan Fishwick nor the vendor or lessor accept any responsibility in respect of these particulars, which are not intended to be statements or representations of fact and any intending purchaser or lessee must satisfy himself by inspection or otherwise as to the correctness of each of the statements contained in these particulars. Any floorplans on this brochure are for illustrative purposes only and are not necessarily to scale.

Offices at: Chorlton, Didsbury, Disley, Hale, Glossop, Macclesfield, Manchester Deansgate, Manchester Whitworth Street, New Mills, Sale, Wilmslow and Withington

36-38 Alderley Road, Wilmslow SK91JX
01625 532000

wilmslow@jordanfishwick.co.uk
www.jordanfishwick.co.uk